

# FLOOD HAZARD MAP

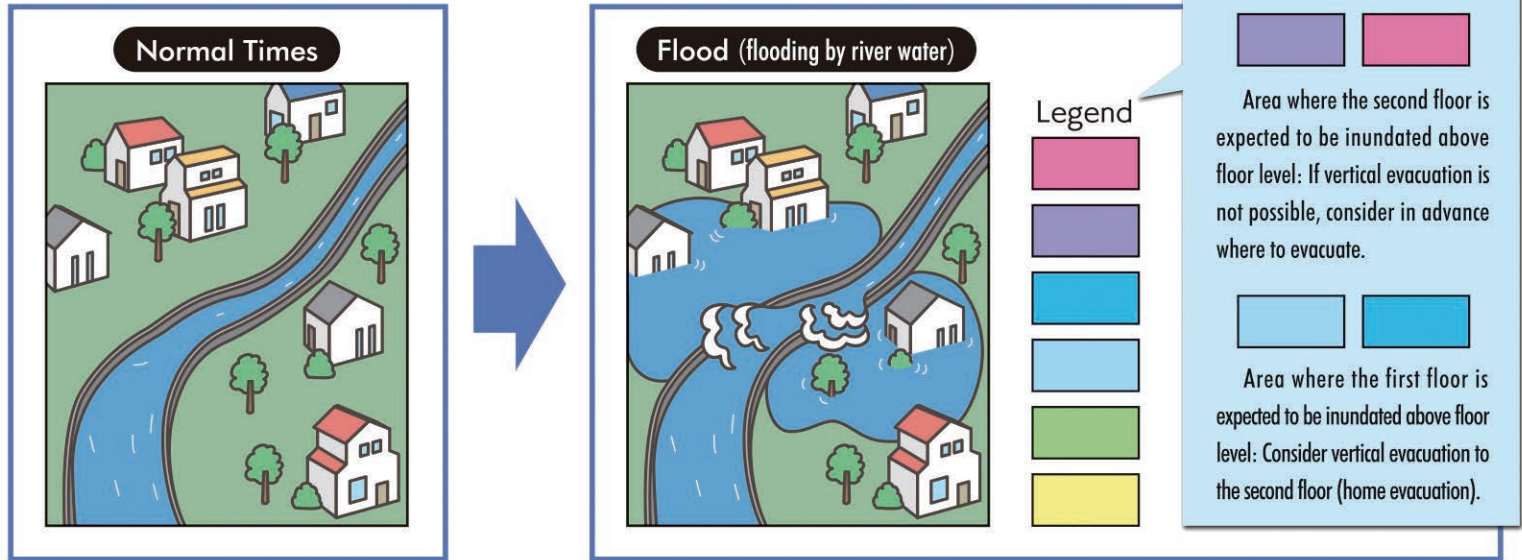
Expected Largest Scale

Contact Information Disaster Prevention and Safety Division, General Affairs Department, Miyoshi City Hall 50 Kosaka, Miyoshi-cho, Miyoshi-shi Phone: 0561-32-2111 (main)

## Points of Heavy Rain

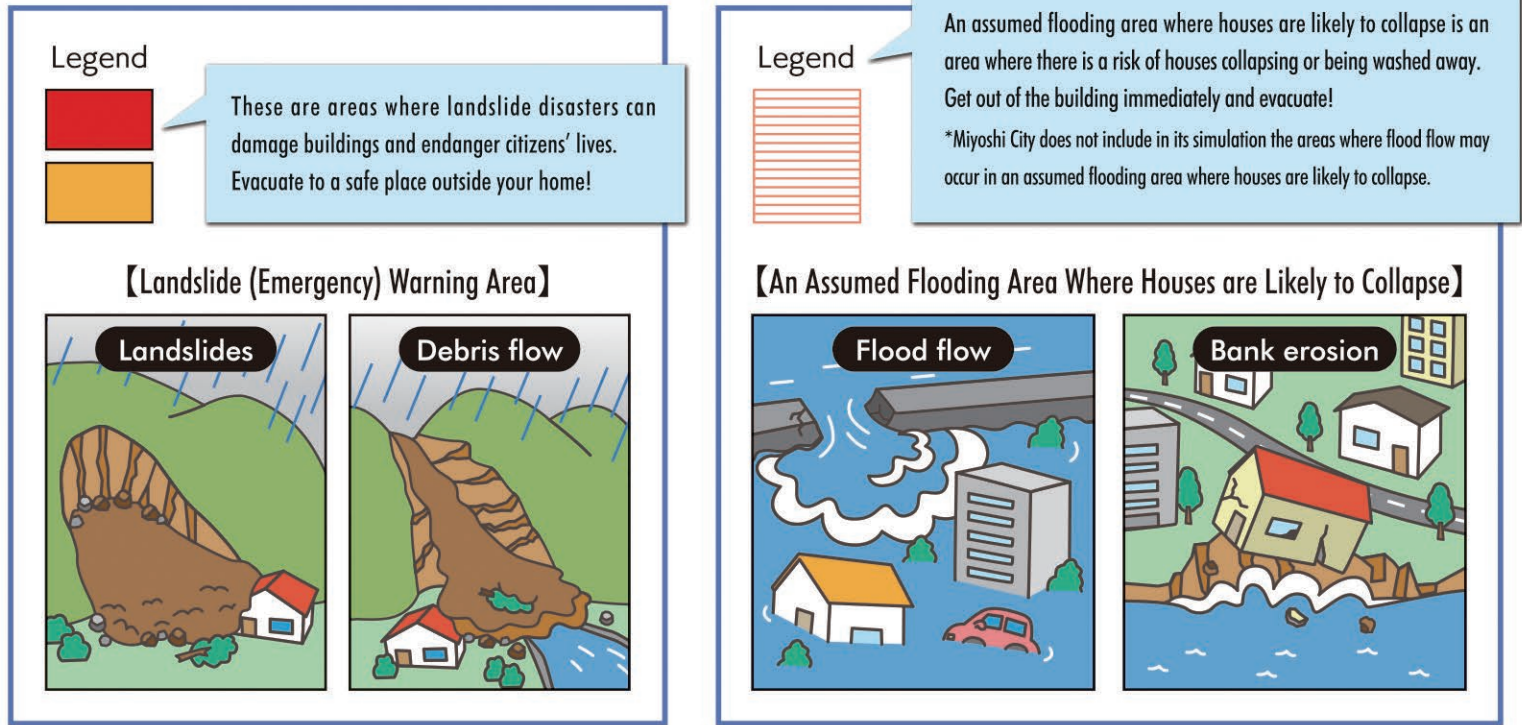
### ●Mechanism of flood (flooding by river water)

A flood is a state in which the amount of water in a river has increased significantly more than usual due to continuous heavy rain. Overflow of river water or breakage of embankments causes inundation.



### ●Check the dangerous spots around your home!

Check what kind of disasters may occur in your area or around your home.



## TOGO Town

## Kariya City

## Nisshin City

## Toyota City

## Explanation of This Hazard Map (Expected Largest Scale)

This hazard map assumes the expected largest scale of rainfall for the target rivers such as the Sakai River System Sakai River and the Aizuma River, and is a simulation prediction of the inundation situation when the target rivers are flooded (collapsed bank, overflow stream, bank overtopping) based on the current maintenance status.

Please note that floods may occur even outside the expected flood inundation area shown on this map, depending on the conditions such as how it rains.

The data released by Aichi Prefecture on April 10, 2020 is used for this map.

|                    |                   |
|--------------------|-------------------|
| Sakai River basin  | 760 mm / 24 hours |
| Aizuma River basin | 765 mm / 24 hours |

\*Reference: Tokai heavy rain: 504 mm / 24 hours

### What is an evacuation shelter?

A facility where disaster victims can stay for a certain period of time in the event of a disaster.

### What is an evacuation site?

A facility or place where you can evacuate urgently and ensure your safety in the event of a disaster.

### Designated Temporary Evacuation Site

| No. | Name   | Flood from Inland Waters | Snap slope failure, debris flow, landslides |
|-----|--|--------------------------|---|
| 1   | Kurozasa Public Hall   |                          |   |
| 2   | Kurozasa Municipal Day Care Center                                 | Facility                 |   |
| 3   | Kurozasa Rest Home for the Aged                                    |                          |   |
| 4   | Miyoshigaoka-aoa Fureai Centre                                     | ×                        |   |
| 5   | Miyoshigaoka-aoa Neighborhood Assembly Hall                        |                          |   |
| 6   | Miyoshigaoka Neighborhood Assembly Hall                            |                          |   |
| 7   | Hibarigaoka Neighborhood Assembly Hall (Hibarigaoka Fureai Centre) |                          |   |
| 8   | Miyoshigaoka-midori Neighborhood Assembly Hall                     |                          |   |
| 9   | Takane Public Hall   |                          |   |
| 10  | Midori Municipal Day Care Center                                   |                          |   |
| 11  | Miyoshigaoka-sakura Neighborhood Assembly Hall                     |                          |   |
| 12  | Ukigai Public Hall (Ukigai Happiness Hall)                         | Facility                 |   |
| 13  | Ukigai Children's Community Center                                 |                          |   |
| 14  | Ukigai Rest Home for the Aged                                      |                          |   |
| 15  | Shirayama Municipal Day Care Center                                |                          |   |
| 16  | Ukigai Neighborhood Assembly Hall                                  |                          |   |
| 17  | Azabu Public Hall  |                          |   |
| 18  | Azabu Rest Home for the Aged                                       |                          |   |
| 19  | Azabu Children's Community Center                                  |                          |   |
| 20  | Azabu Municipal Day Care Center                                    |                          |   |
| 21  | Takane Children's Community Center                                 |                          |   |
| 22  | Hirake Neighborhood Assembly Hall (Hirake Kaikan Sun Peace)        | ×                        |   |
| 23  | Araya Children's Community Center                                  |                          |   |
| 24  | Araya Rest Home for the Aged                                       |                          |   |
| 25  | Tenno Municipal Day Care Center                                    |                          |   |
| 26  | Higashiyama Rest Home for the Aged                                 |                          |   |
| 27  | Higashiyama Neighborhood Assembly Hall                             |                          |   |
| 28  | Higashiyama Children's Community Center                            |                          |   |
| 29  | Higashiyama Neighborhood Assembly Hall (Sunrise Hall)              |                          |   |
| 30  | Kamigatake Neighborhood Assembly Hall (Kamigatake Hall Sun Friend) |                          |   |
| 31  | Nakashima Neighborhood Assembly Hall                               |                          |   |
| 32  | Wakaba Municipal Day Care Center                                   |                          |   |
| 33  | Miyoshi-kami Public Hall   | Facility                 |   |
| 34  | Miyoshi-kami Children's Community Center                           |                          |   |
| 35  | Hachigake Children's Community Center                              |                          |   |
| 36  | Welfare Center   |                          |   |
| 37  | General Child Rearing Support Center                               |                          |   |
| 38  | Chubu Rest Home for the Aged                                       |                          |   |
| 39  | Miyoshi-shimo Public Hall  |                          |   |
| 40  | Miyoshi-shimo Children's Community Center                          |                          |   |
| 41  | Miyoshi-shimo Rest Home for the Aged                               |                          |   |
| 42  | Sumire Municipal Day Care Center                                   |                          |   |
| 43  | Nishishiki Children's Community Center                             |                          |   |
| 44  | Nishishiki Rest Home for the Aged                                  |                          |   |
| 45  | Nishishiki Neighborhood Assembly Hall (Nishishiki Fureai Kaikan)   |                          |   |
| 46  | Nakayoshi Municipal Day Care Center                                | ×                        |   |
| 47  | Uchikoshi Municipal Day Care Center                                |                          |   |
| 48  | Yamabushi Neighborhood Assembly Hall                               |                          |   |
| 49  | Uchikoshi Public Hall  |                          |   |
| 50  | Uchikoshi Rest Home for the Aged                                   |                          |   |
| 51  | Uchikoshi Children's Community Center                              |                          |   |
| 52  | Myochi-kami Public Hall  |                          |   |
| 53  | Myochi-kami Children's Community Center                            | Facility                 |   |
| 54  | Myochi-kami Rest Home for the Aged                                 |                          |   |
| 55  | Myochi Municipal Day Care Center                                   |                          |   |
| 56  | Myochi-shimo Public Hall   |                          |   |
| 57  | Myochi-shimo Children's Community Center                           |                          |   |
| 58  | Myochi-shimo Rest Home for the Aged                                |                          |   |
| 59  | Fukuta Rest Home for the Aged                                      | ×                        |   |
| 60  | Fukuta Children's Community Center                                 | Facility (2nd floor)     |   |
| 61  | Nagaya Prison  | Facility                 |   |
| 62  | Akeoshi Hall   | ×                        |   |

### Fire Brigade Station

| No. | Name                                 |
|-----|--------------------------------------|
| 1   | Araya Branch                         |
| 2   | Miyoshi-kami Branch                  |
| 3   | Miyoshi-shimo Branch (with Lifeboat) |
| 4   | Nishishiki Branch (with Lifeboat)    |
| 5   | Fukuta Branch (with Lifeboat)        |
| 6   | Myochi-kami Branch                   |
| 7   | Myochi-shimo Branch                  |
| 8   | Uchikoshi Branch                     |
| 9   | Azabu Branch                         |
| 10  | Ukigai Branch                        |
| 11  | Kurozasa Branch                      |
| 12  | Higashiyama Branch                   |
| 13  | Takane Branch                        |

### Welfare Shelter

| No. | Name  |
|-----|---|
| 1   | Miyoshi Special Needs Education School                      |
| 2   | Miyoshi Elderly Nursing Home                                |
| 3   | (SWC)Ayumikai Shiomi no Oka                                 |
| 4   | (SWC)Ayumikai Sakura no Oka                                 |
| 5   | (SWC)Ayumikai Ohisama House No. 1 Building                  |
| 6   | (SWC)Asamidori no Kaze Life Nursing Care Facility Warabi    |
| 7   | (SWC)Asamidori no Kaze, Group Home with Aid Facility Warabi |

### Evacuation Area and Evacuation Shelter

| No. | Name   | Flood from Inland Waters | Snap slope failure, debris flow, landslides |
|-----|--|--------------------------|---|
| 1   | Chubu Elementary School                        |                          |   |
| 2   | Hokubu Elementary School                       |                          |   |
| 3   | Nanbu Elementary School                        |                          |   |
| 4   | Tenno Elementary School                        |                          |   |
| 5   | Miyoshi Elementary School                      |                          |   |
| 6   | Miyoshigaoka Elementary School                 |                          |   |
| 7   | Midorigaoka Elementary School                  | Gymnasium                | Gymnasium                                   |
| 8   | Kurozasa Elementary School                     |                          |   |
| 9   | Miyoshi Junior High School                     |                          |   |
| 10  | Kita Junior High School                        |                          |   |
| 11  | Minami Junior High School                      |                          |   |
| 12  | Miyoshigaoka Junior High School                |                          |   |
| 13  | Miyoshi Park Gymnasium and Sports Facility     |                          |   |
| 14  | Kanayoshi Place (former Culture Center SunArt) | Facility                 | Facility                                    |
| 15  | Prefectural Miyoshi High School                | ×                        | ×   |

\*When using as an evacuation shelter, only the gymnasium can be used.

### Disaster Prevention Related Facility

| No. | Name                                |
|-----|-------------------------------------|
| 1   | Miyoshi City Hall                   |
| 2   | Miyoshi Police Box                  |
| 3   | Miyoshigaoka Police Box             |
| 4   | Miyoshikita Police Box              |
| 5   | Miyoshi Residential Police Box      |
| 6   | Miyoshi Fire Station                |
| 7   | Miyoshi Fire Station, Minami Branch |

### Designated Temporary Evacuation Site and Evacuation Shelter

| No. | Name                            | Facility | Facility |
|-----|---------------------------------|----------|----------|
| 16  | OKAYOSHI Community Center       | Facility | Facility |
| 17  | Nanbu Regional Community Center | ×        | ×        |

### Evacuation Area

| No. | Name                            | Facility | Facility |
|-----|---------------------------------|----------|----------|
| 17  | Nanbu Regional Community Center | ×        | ×        |

## Legend

|   |                                      |  |             |
|---|--------------------------------------|--|-------------|
| Evacuation Area and Evacuation Shelter                      | Emergency Transport Roads            | An Assumed Flooding Area Where Houses are Likely to Collapse | Flood Depth |
| Designated Temporary Evacuation Site and Evacuation Shelter | First Emergency Transport Roads      | Bank erosion   | 5.0m ~ 10m  |
| Evacuation Area   | Second Emergency Transport Roads     | Landslide (Emergency) Warning Area                           | 3.0m ~ 5.0m |
| Designated Temporary Evacuation Site                        | Third Emergency Transport Roads      | Landslide Emergency Warning Area                             | 1.0m ~ 3.0m |
| Welfare Shelter   | Disaster Prevention Related Facility | Landslide Warning Area                                       | 0.5m ~ 1.0m |
| Fire Brigade Station  | Water Level Station                  |  | 0.3m ~ 0.5m |
|   |                                      |  | ~ 0.3m      |